



# Community Responsive Design, Creating a Sense of Ownership of Space

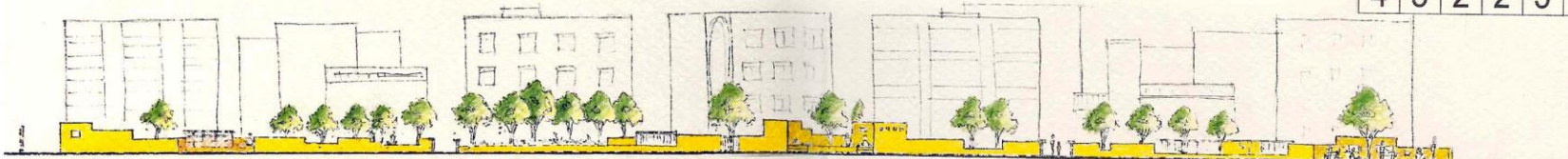
Sadiq Polack

Hussainabad Neighborhood Park ,  
Abdul Wahid Adamjee park for  
Pakistan Memon Educational and Welfare Society

Institute of Architects' Award winning project, Design  
of a neighbourhood park in a  
density populated area of Karachi  
(Partial Implementation)  
Karachi 2006 – Not implemented

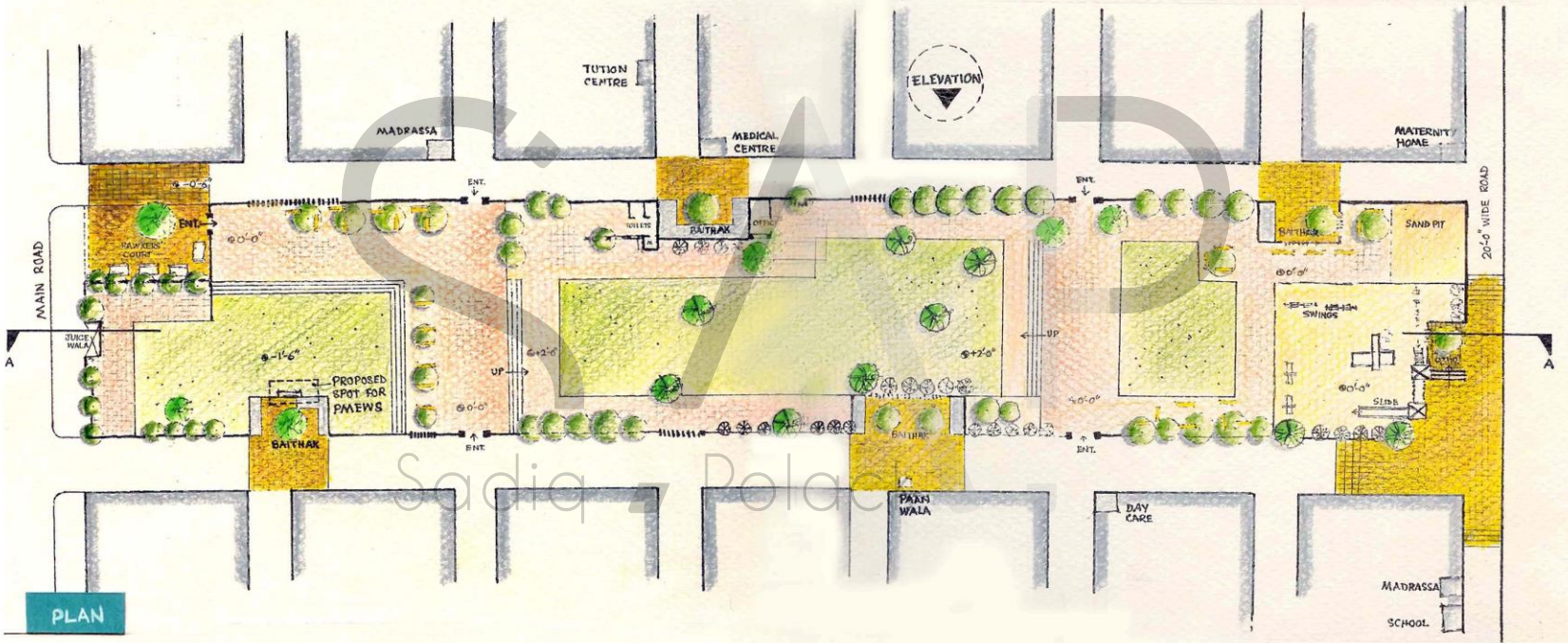


4 5 2 2 3 6



ELEVATION

BAITHAK      ENT.      BAITHAK      ENT.      HAWKERS' COURT



PLAN

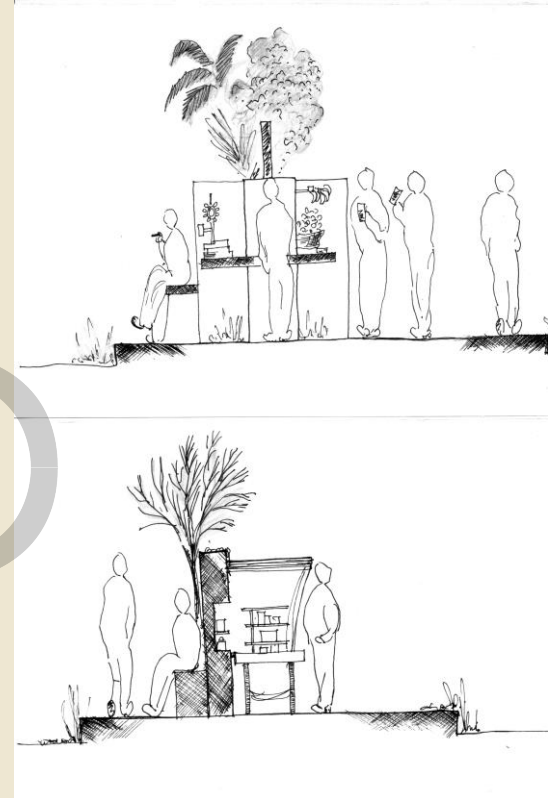
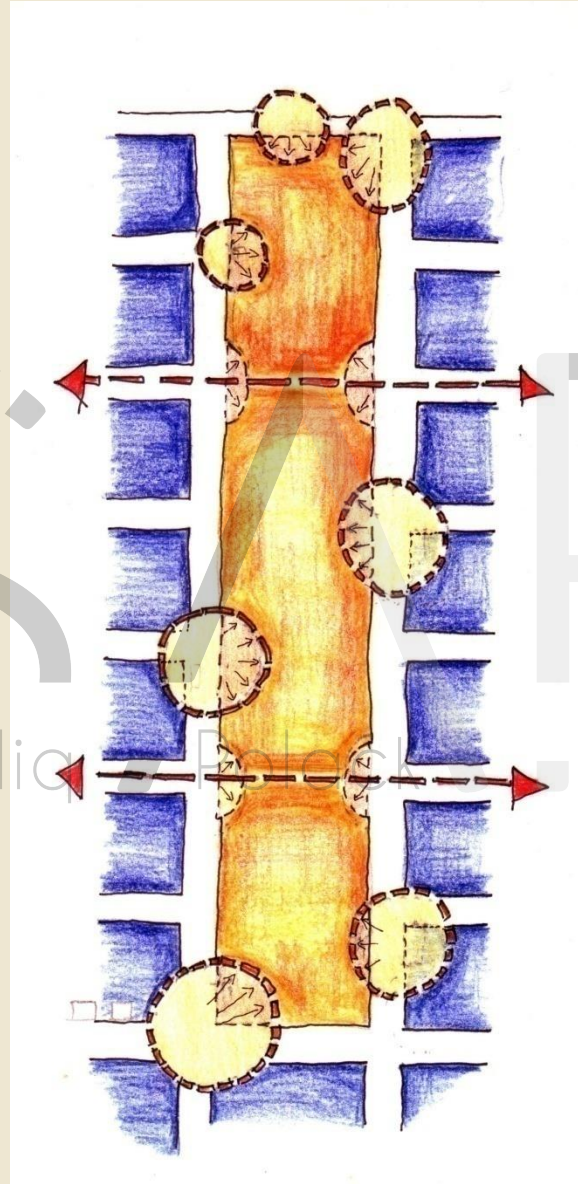
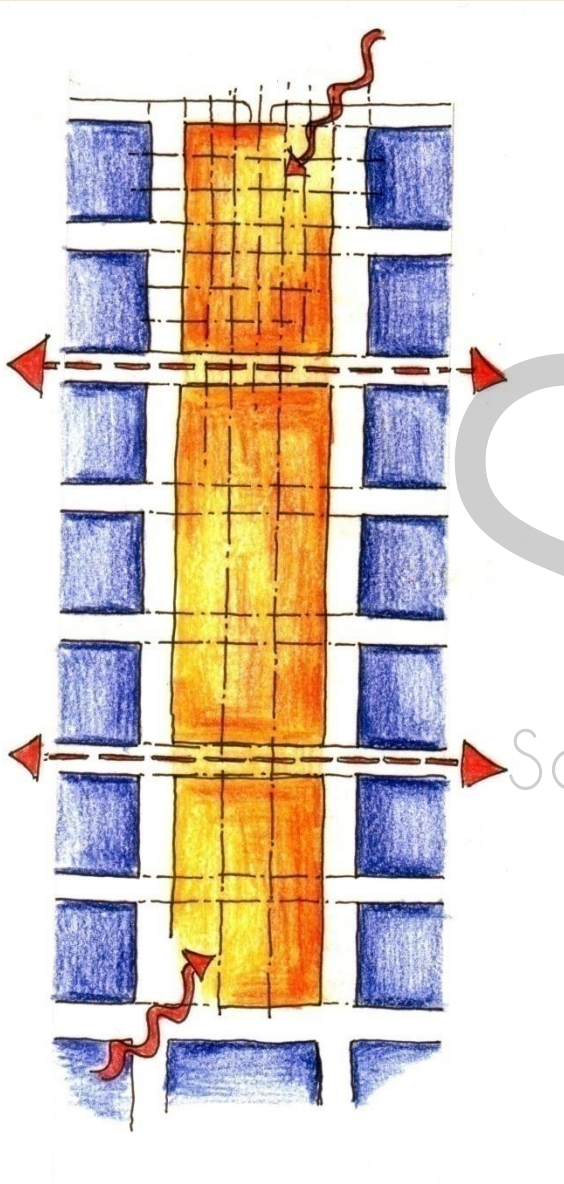


SECTION-AA

PROPOSED SPOT FOR PMEWS

SCALE: 1" = 40'-0"





- 200-400 sqft of cc tiles to be designed and implemented by students of the neighbourhood
- Painting on the boundary wall
- Plantation of trees
- Rehabilitation of hawkers.
- Sitting areas inside + outside
- Dustbins inside+outside
- Provision of sabiel