

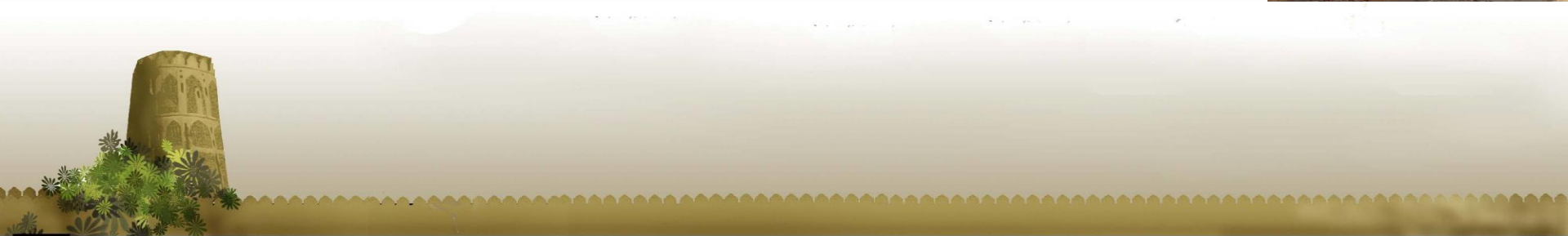


# KOT DIGI Public Park

04 February 2009

Presentation by M. Christophe Polak

*The Architects Polak*





CANAL

FARMS

20' WIDE ROAD

SITE

FORT KOTDIGI



The Kot Digi Public Park serving as an oasis for the region, located at the base of the fort and offering different perspectives and views to the fort.





# CONTEXTUAL PLAN





# SITE PLAN





## Kot Digi Park

- A-Visitor Centre
- B-Eateries
- C-Washroom
- D-Sand pit/ Swings
- E-Jogging Track
- F-Guard room
- G-Maintenance Rm
- H-Baradari/ Water Tank
- I-Paved Platform
- J-Flower Bed Platform
- K-Water Channel/ Storm Water Drain



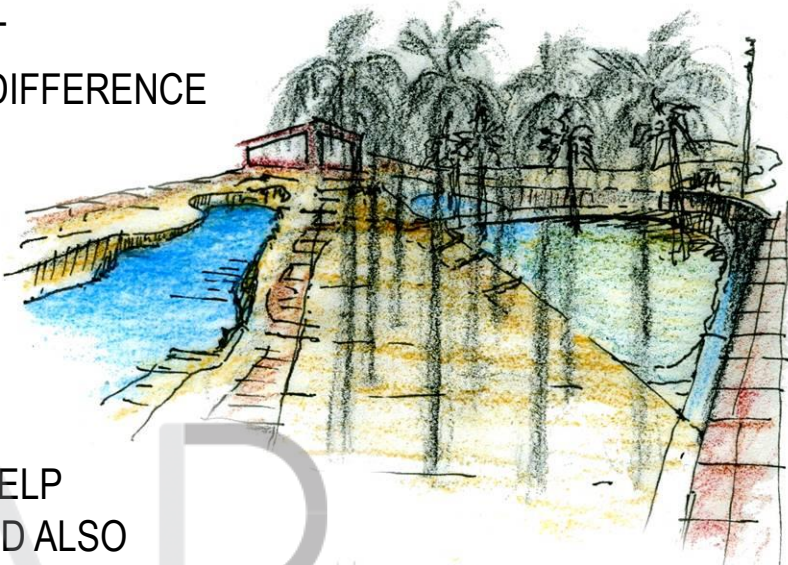
# SITE PLAN



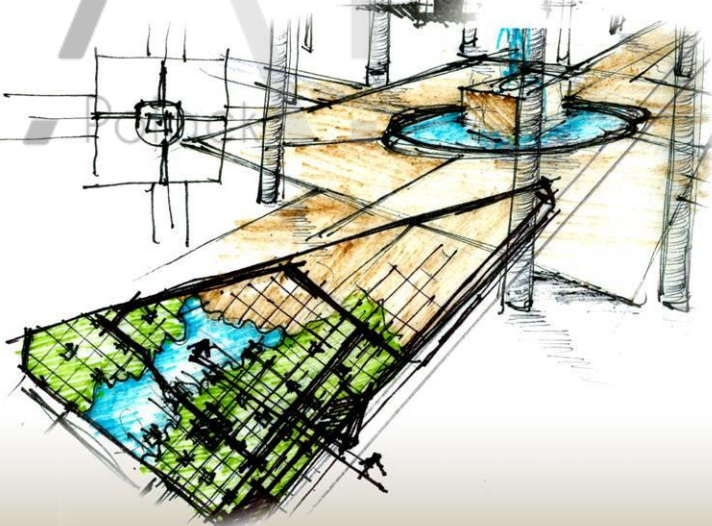
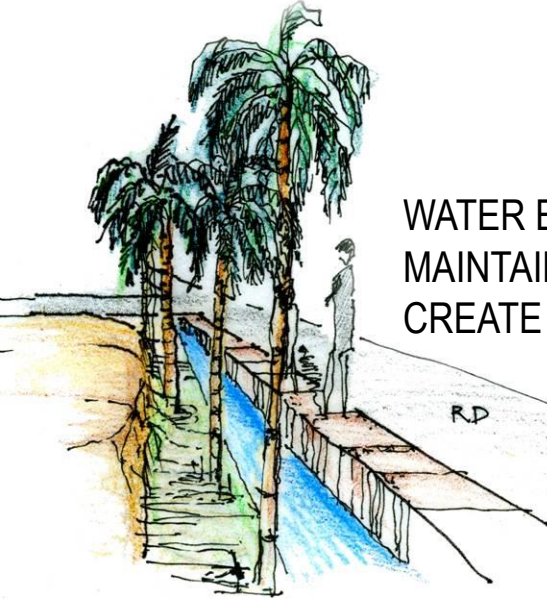




PARK VIEWED FROM DIFFERENT PERSPECTIVES DUE TO LEVEL DIFFERENCE AND PROXIMITY TO THE FORT

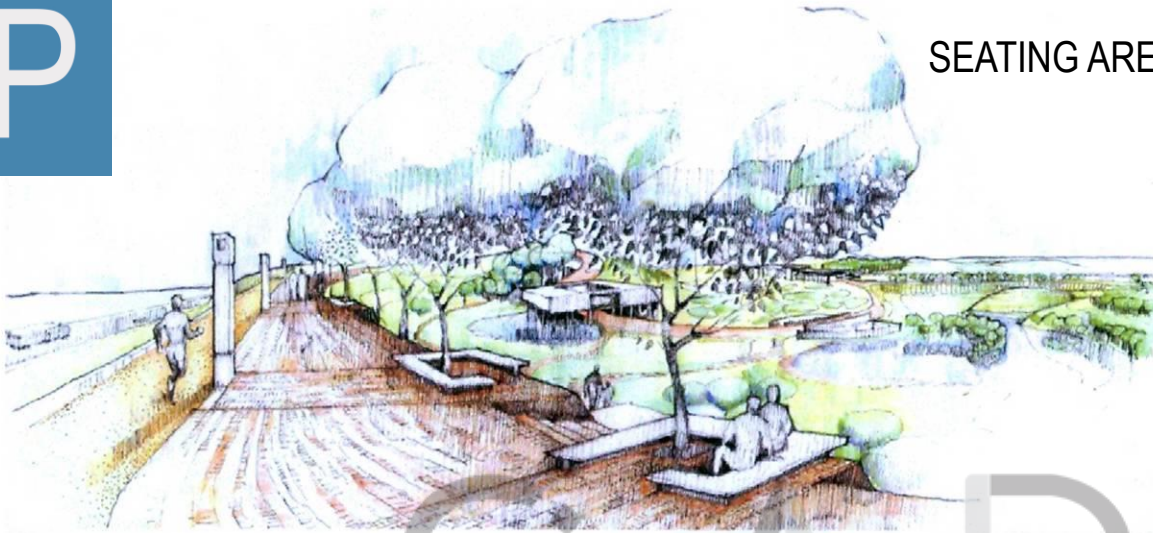


WATER BODIES AND FOUNTAINS HELP MAINTAIN THE HUMIDITY LEVEL AND ALSO CREATE COOLING REFRESHING EFFECT





SEATING AREA ALONG THE PATHWAYS



PALM GARDEN







THE PALM TREES CUT INTO  
POND AND CONTOURS TO CREATE  
MORE HOLISTIC IMPACT





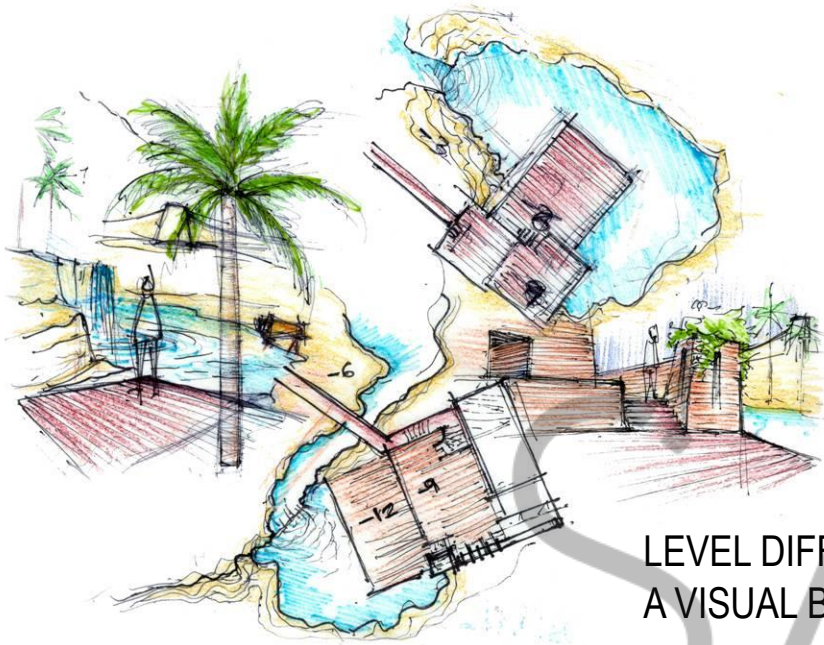
WALL DEFINING PORTAL TO THE PARK  
WATER CHANNEL DIRECTING VISITORS

THE DIFFERENCE BETWEEN  
THE ROAD LEVEL AND THE SITE  
RESTRICTS THE ENTRANCE

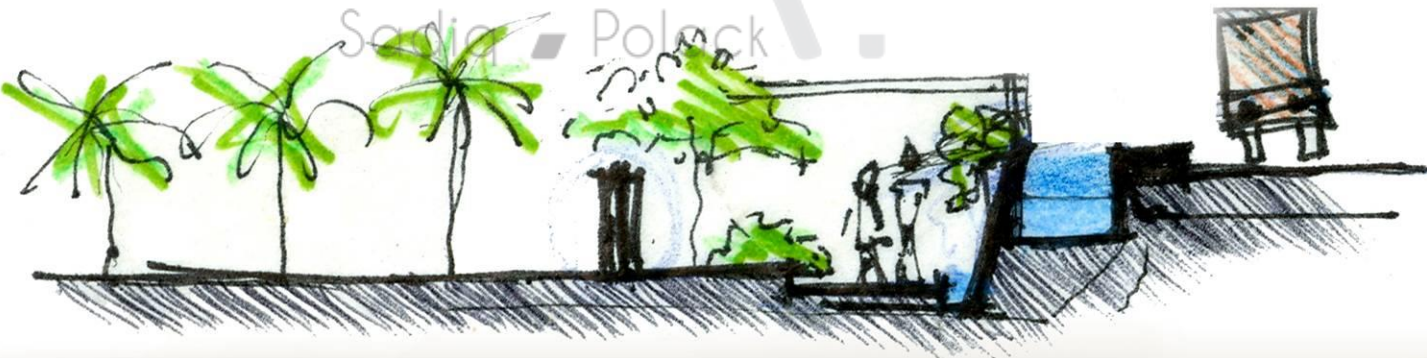


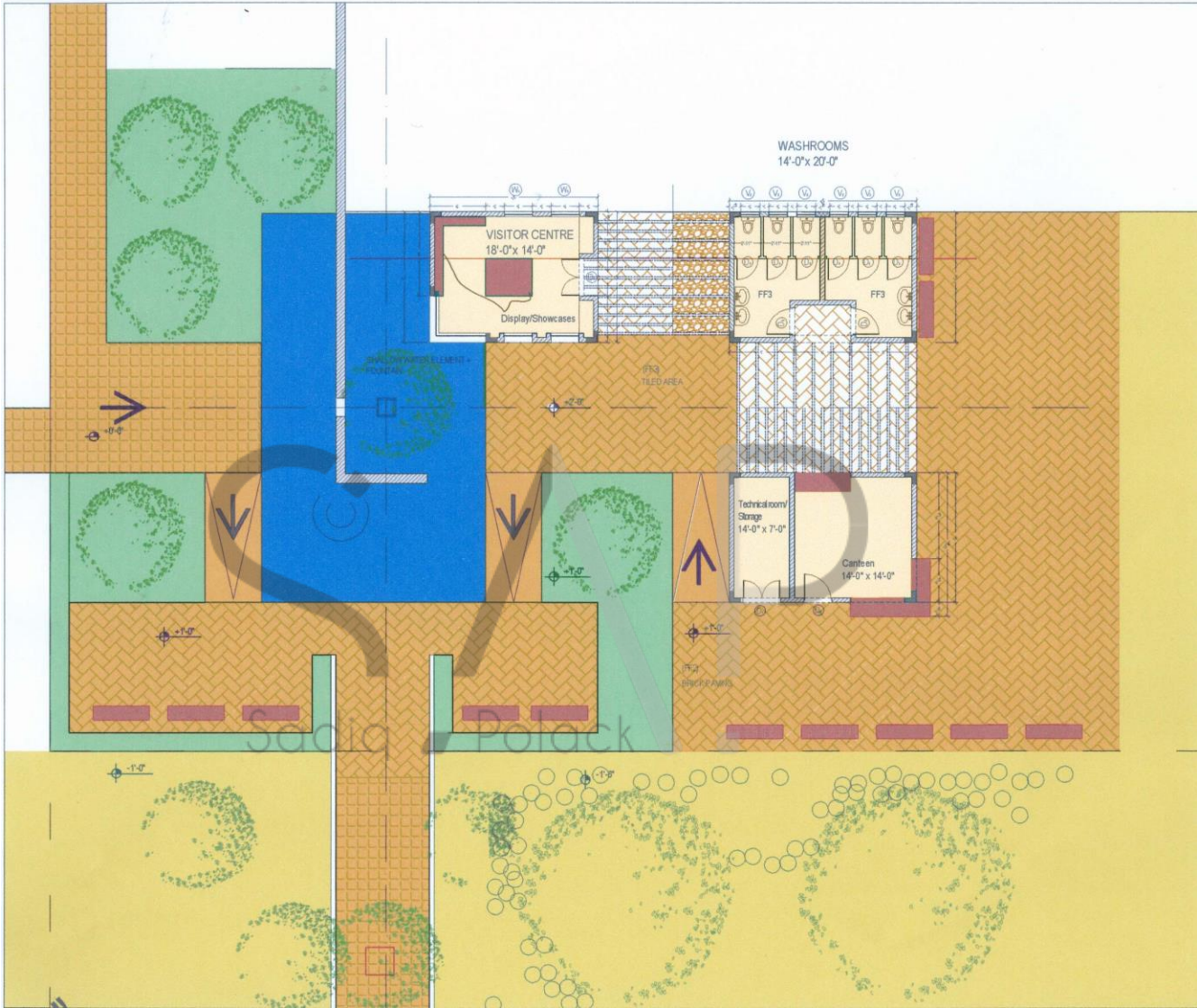
WATER CHANNEL ALONG PERIPHERY ACT  
AS A RESERVOIR FOR RAIN WATER

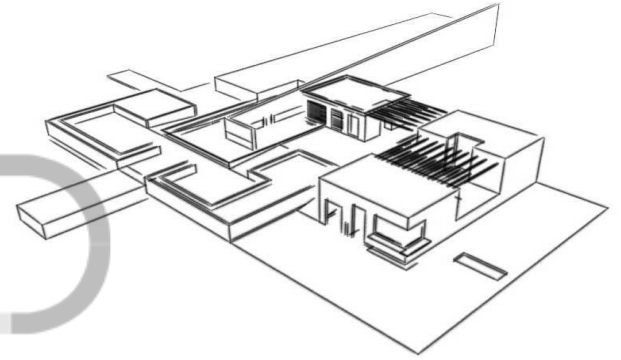




LEVEL DIFFERENCE, WATERBODIES AND PLANTS ACT AS A VISUAL BARRIER BETWEEN THE PARK AND THE ROAD

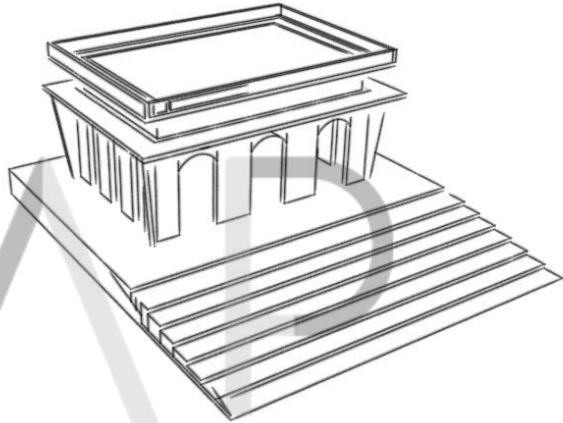






Sadiq Polack





Sadiq Polack

